

SPLP



LIMA-LAS PALMAS, PERU

Base Aérea FAP Las Palmas

11 SET 2018

Eff 12 Set

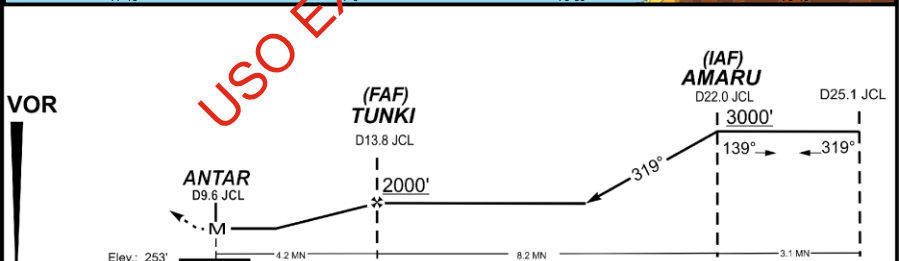
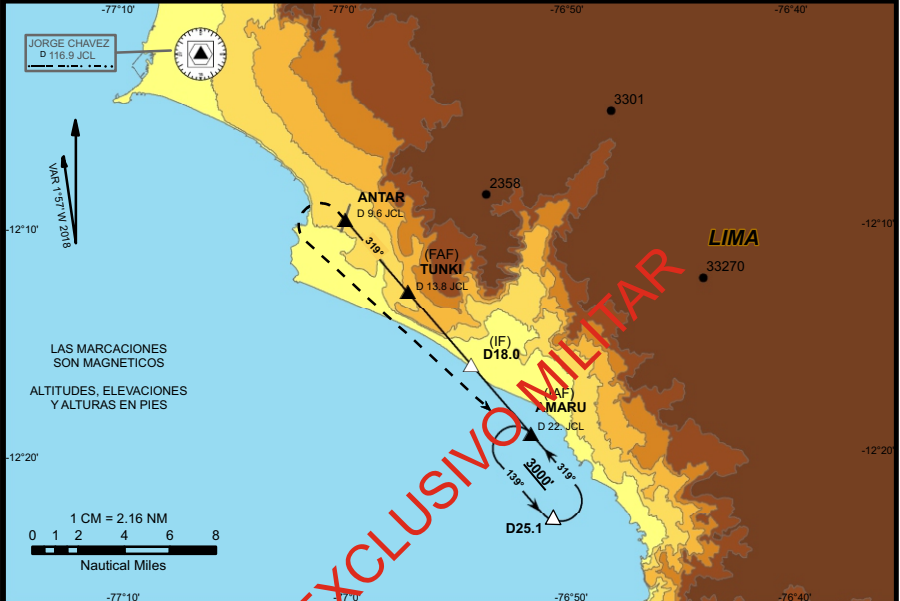
VOR DME A Rwy 20

LIM APP 119.7	LIM TOWER 118.1	LP TOWER 127.7	LP GROUND 119.4
VOR JCL 116.9	Final Apch Crs 319°	Minimum Alt TUNKI 2000' (1746')	MDA (H) Refer to Minimums
RWY 20 253'			MSA 315°-14500' 5300'-109°

**MISSED APCH:** Immediately turn LEFT climbing to 2000' and proceed to AMARU.  
Follow ATC instructions.

Alt Set : hPa  
1 Max. IAS in base turn 180 Kts. Trans level: By ATC Trans Alt 3000'  
2 DME Required. 3 The geographic coordinates are referential

25 NM ANTAR



Gnd speed - Kts	70	90	100	120	140	160	JCL 116.9 R-139	LT	AMARU 3000'
	372	478	531	637	743	849			
MAP at D9.6 JCL									

STRAIGHT - IN - LANDING RWY 20						Max Kts	CIRCLE-TO-LAND Not Authorized East of Airport		
ALS			ALS OUT				Day	Night	
A	NA			NA			100	900'(646') - 3 KM	900'(646') - 3 KM
B	NA			NA			135	1000'(746') - 4 KM	1000'(746') - 4 KM