

SPZO - Intl. Teniente FAP Alejandro Velasco Astete

CARTA DE APROXIMACION
POR INSTRUMENTOS

RNP RWY 28 (AR).URCOS

'AD Elev. 10860'	Altitud de Transición 18000'	TWR CUSCO TORRE 118.1	APP CUSCO APROXIMACION 120.6	Ground 121.9
RNAV (RNP) RNV 28	Apt. Elev. 10860' THR 10702'	ZO556 (FAF) GP 12700' (2.80°)	Trans Level By ATC	



MISSED APPROACH:

Climb to **FL210** via the RNAV (RNP) Missed Approach track to **ZO582** and hold. Required climb gradient **255'/NM**.

APPROACH:

- Alt Set: **hPa**
- Approach not authorized when airport temperature below **-8°C** or above **26°C**
- One-engine inoperative aircraft continuing below the DA are committed to land.

FMS:

- Deselect **URC** and **ZCO VOR**

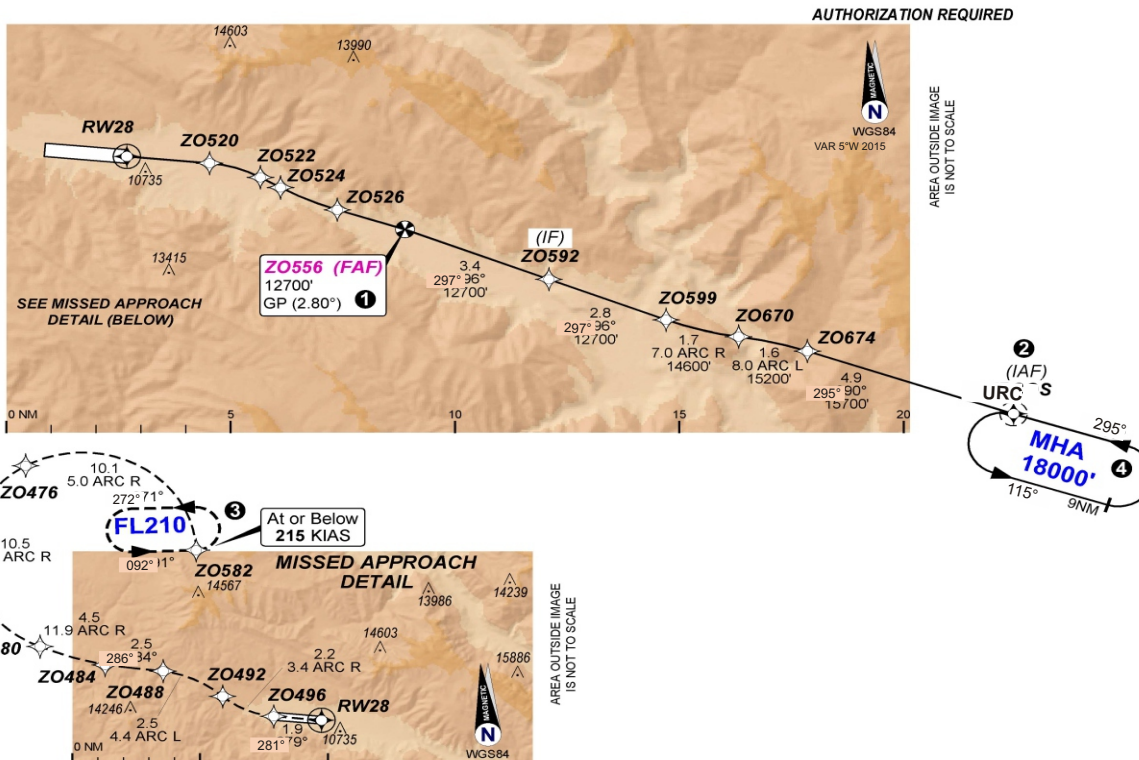
REQUIRED EQUIPMENT:

- (2) FMGC
- (2) MCDU
- (2) FD
- (2) AP
- (4) EFIS DU
- (2) L/DEV
- (2) V/DEV
- (1) RNP P/B (if installed)
- (2) GPS
- (3) IRS
- (2) FCU
- EGPWS

SPEED RESTRICTION:

- Max **250 KIAS** SPZO TMA

- ① **FINAL APP** must be announced beyond this point.
- ② Cross **URCOS** inbound with gear down and **CONF2**.
- ③ All-engine missed approach holding pattern entry speed at **ZO582** at or below **230 KIAS**.
- ④ **URCOS** holding restrictions:
 - Minimum entry altitude **FL230** via **ILMOX**, **CEMIL**, **TILPA**, or **LITOT** arrivals.
 - Minimum entry altitude **18000'** via **URC 115°** or **295°** radial.
 - Minimum Holding Altitude once established **18000'**.
 - Max **220 KIAS** holding speed below **FL230**.
 - **URCOS VOR/DME** not required.
 - Requires **EPE <0.3**.



CEILING AND VISIBILITY REQUIRED
1000' - 5km

RNP 0.3
CAT C
DA (H) 11800' (1098') - 5000m

