

CARTA DE APROXIMACION POR INSTRUMENTOS

AD Elev. 10860'	Altitud de Transición 18000'	TWR CUSCO TORRE 118.1	APP CUSCO APROXIMACION 120.6	Ground 121.9
RNAV (RNP) RNV 28	Apt. Elev. 10860' THR 10702'	ZO556 (FAF) GP 12700' (2.80°)	Trans Level By ATC	



MISSED APPROACH:
Climb to **FL210** via the RNAV (RNP) Missed Approach track to **ZO582** and hold. Required climb gradient **255'/NM**.

APPROACH:

- Alt Set: **hPa**
- Approach not authorized when airport temperature below -8°C or above 26°C
- One-engine inoperative aircraft continuing below the DA are committed to land.

FMS:

- Deselect **URC** and **ZCO VOR**

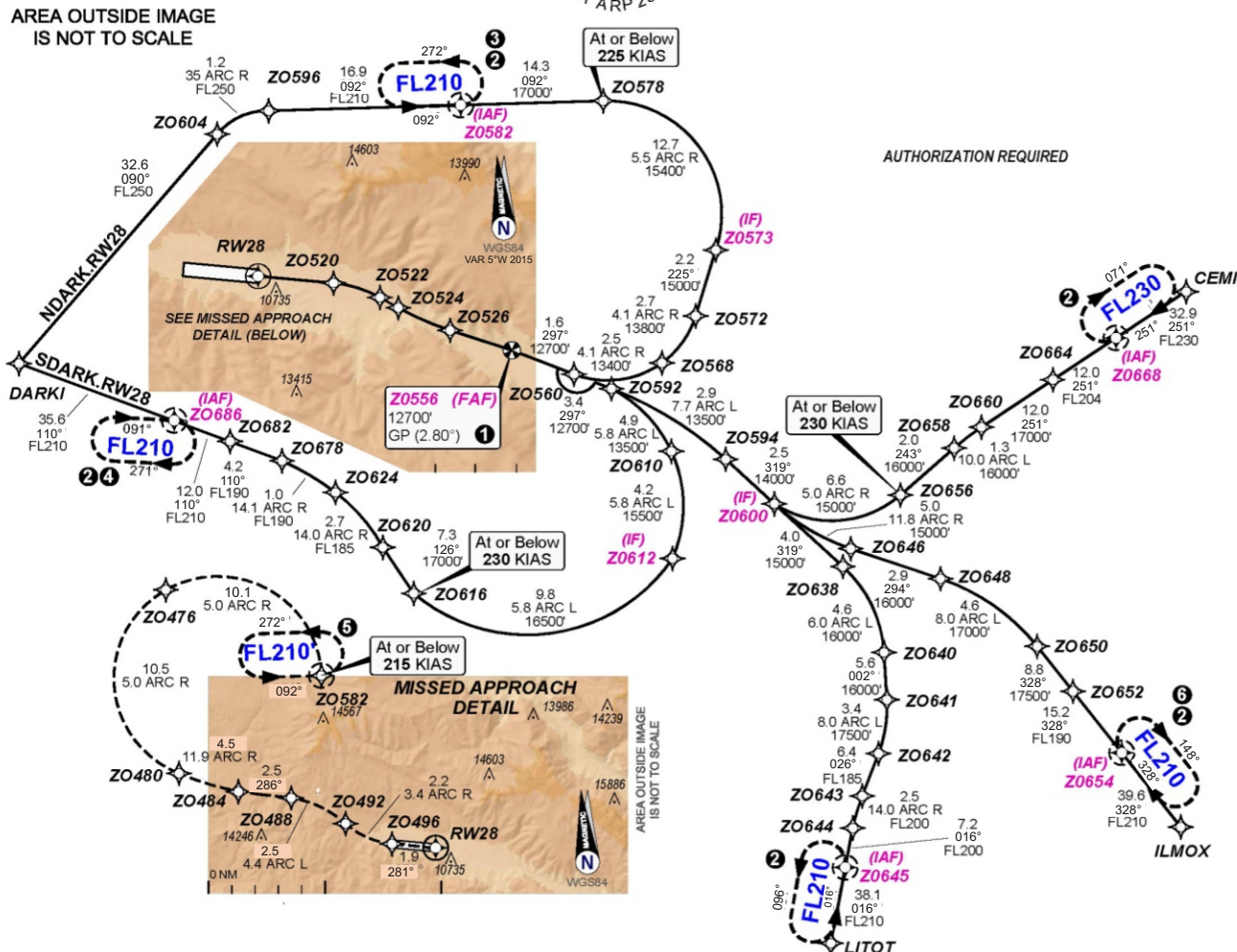
REQUIRED EQUIPMENT:

- (2) FMGC
- (2) MCDU
- (2) FD
- (2) AP
- (4) EFIS DU
- (2) L/DEV
- (2) V/DEV
- (1) RNP P/B (if installed)
- (2) GPS
- (3) IRS
- (2) FCU
- EGPWS

SPEED RESTRICTION:

- Max **250 KIAS** SPZO TMA

- 1** FINAL APP must be annunciated beyond this point.
- 2** Hold only when requested by ATC.
- 3** Approach holding speed at ZO582 via DARKI at or below 265 KIAS.
- 4** Approach holding speed at ZO686 via DARKI at or below 265 KIAS.
- 5** All-engine missed approach holding pattern entry speed at ZO582 at or below 230 KIAS.
- 6** Approach holding speed at ZO654 via ILMOX at or below 230 KIAS.



CEILING AND VISIBILITY REQUIRED

1000' - 5km

RNP 0.3

CAT C

DA(H) **11800'** (1098') - **5000m**

