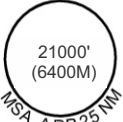


CARTA DE SALIDA NORMALIZADA VUELO POR INSTRUMENTOS (SID)

AD Elev. 10860'	Altitud de Transición 18000'	TWR CUSCO TORRE 118.1	APP CUSCO APROXIMACIÓN 120.6	AUTHORIZATION REQUIRED
<p>TAUJA THREE RNAV (RNP) DEPARTURE (TAUJA3.CEMIL) RNP 0.30 (RWY 10)</p>		<p>TAKE-OFF: RWY 10: Fly the RNAV (RNP) track to Z0600 thence via: CEMIL transition: Cross Z0600 at or above 16500'; Requires Climb Gradient of 380'/NM</p>		
<p>This Departure requires a 1000' ceiling and 5000M visibility</p>				

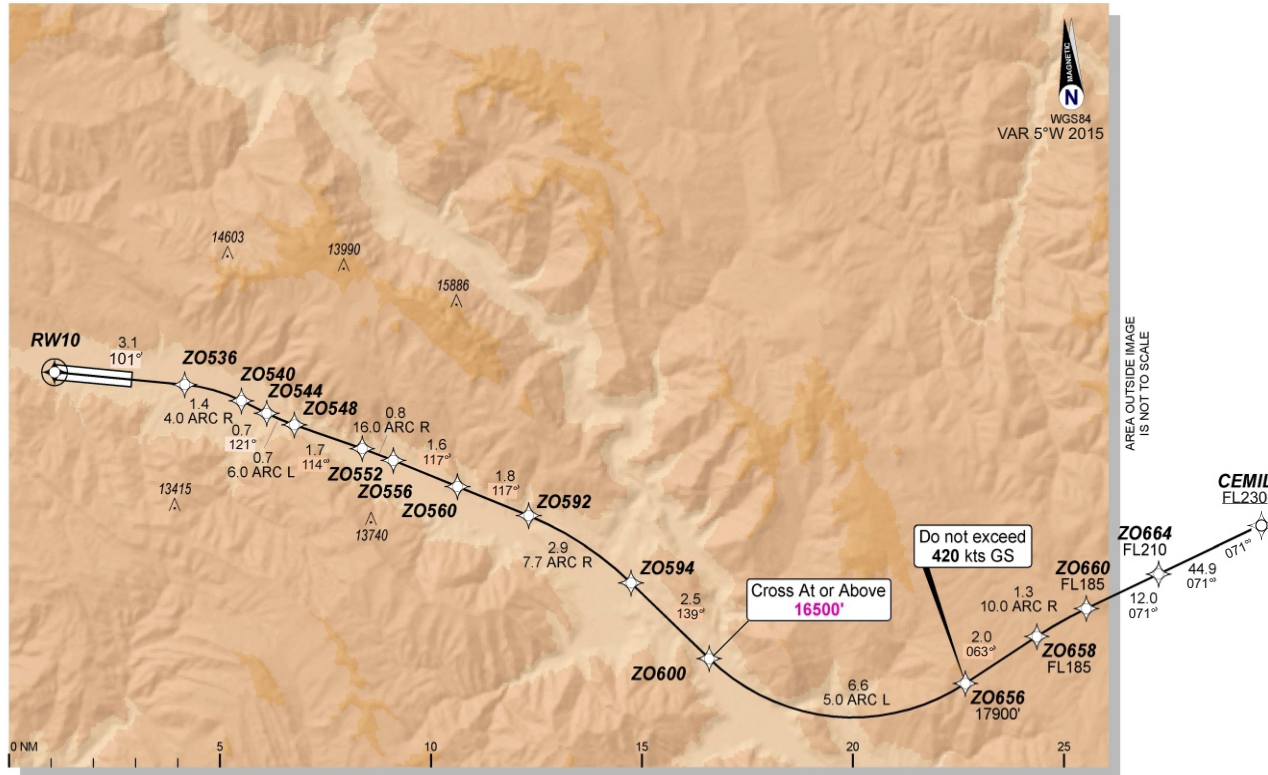
FMS:

- Deselect URC and ZCO VOR

REQUIRED EQUIPMENT:

- (2) FMGC
- (2) MCDU
- (2) FD
- (2) AP
- (4) EFIS DU
- (2) L/DEV
- (1) RNP P/B (if installed)
- (2) GPS
- (2) IRS
- (2) FCU
- EGPWS

- Procedure N/A above a reported surface temperature of 26°C.



AREA OUTSIDE IMAGE IS NOT TO SCALE