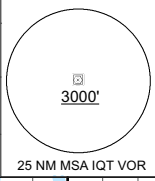
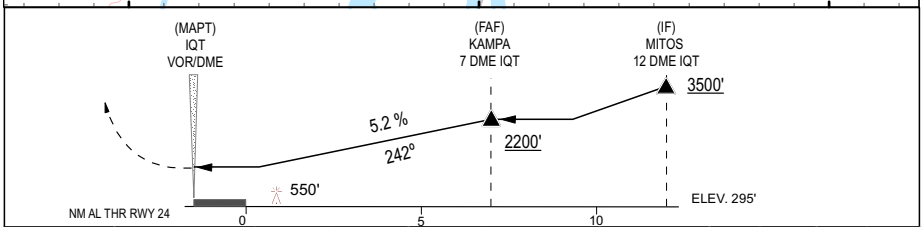
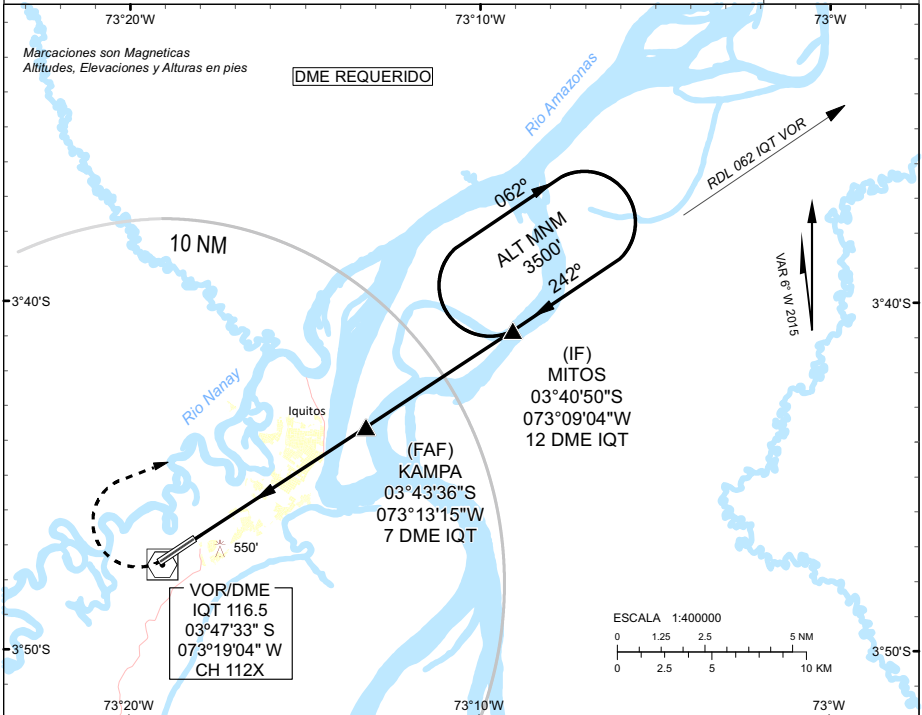


IQUITOS APP: <b>124.1</b>		IQUITOS TWR: <b>118.5</b>		ATIS: <b>132.5</b>	
VOR IQT <b>116.5</b>	Rumbo APCH Final <b>242°</b>	MNM ALT <b>KAMPA</b> <b>2200'</b> (1905')	OCA/H <b>800'</b> (505')	AD Elev: 306' RWY24 Elev: <b>295'</b>	



**APROXIMACIÓN FRUSTRADA:**  
Ascender, virar a la derecha y proseguir al IF

Nivel de Transición: Por ATC      Altitud de Transición: **10000'**



OCA/H	A-B		C-D	ALTITUDES (ALTURAS) FNA			
	800' (505')			3 DME IQT	4 DME IQT	5 DME IQT	6 DME IQT
APCH DIRECTA	2.3 KM		880' (585')	1200' (905')	1520' (1225')	1840' (1545')	
EN CIRCUITO	850' (555')	3 KM	1100' (805')	VELOC. VERTICAL	90	110	130
				DESCENSO	480	585	690

CAMBIOS: Incorporacion SUP. 10 / 17