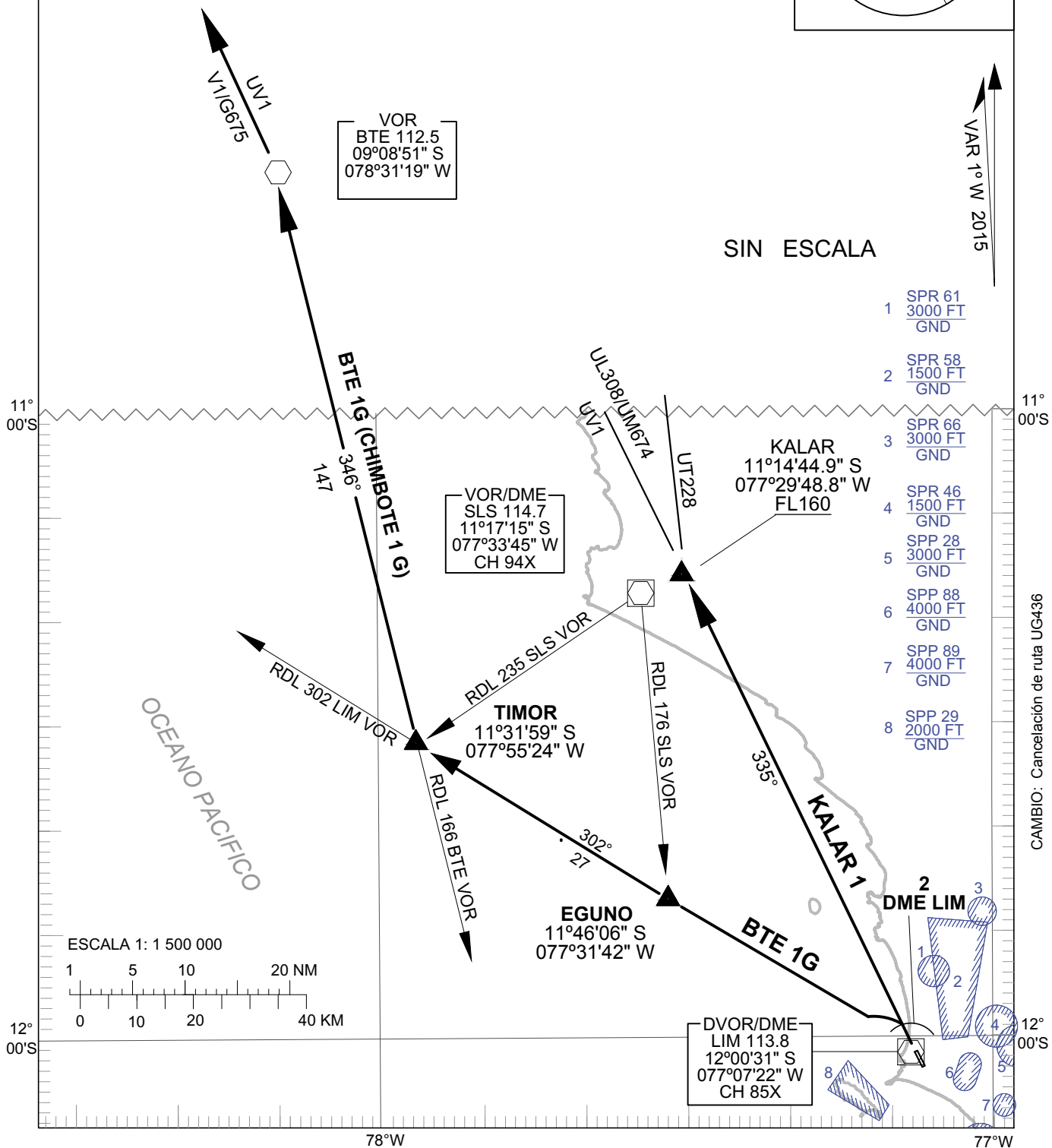
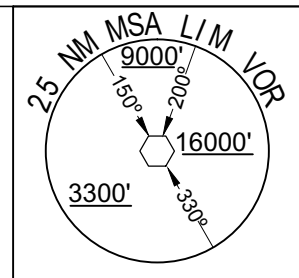


CARTA DE SALIDA NORMALIZADA  
VUELO POR INSTRUMENTOS  
(SID) - OACI

LIMA - PERÚ  
INTL JORGE CHAVEZ  
RWY 33  
KALAR 1  
**BTE 1G (CHIMBOTE 1G)**

ATIS TWR	127.9 118.1	Lima Radar 119.7	Nor-uno radar 119.5 Nor-dos radar 128.1	ALTITUD DE TRANSICION <b>10000'</b>
-------------	----------------	------------------	--	-------------------------------------



CAMBIO: Cancelación de ruta UG436

