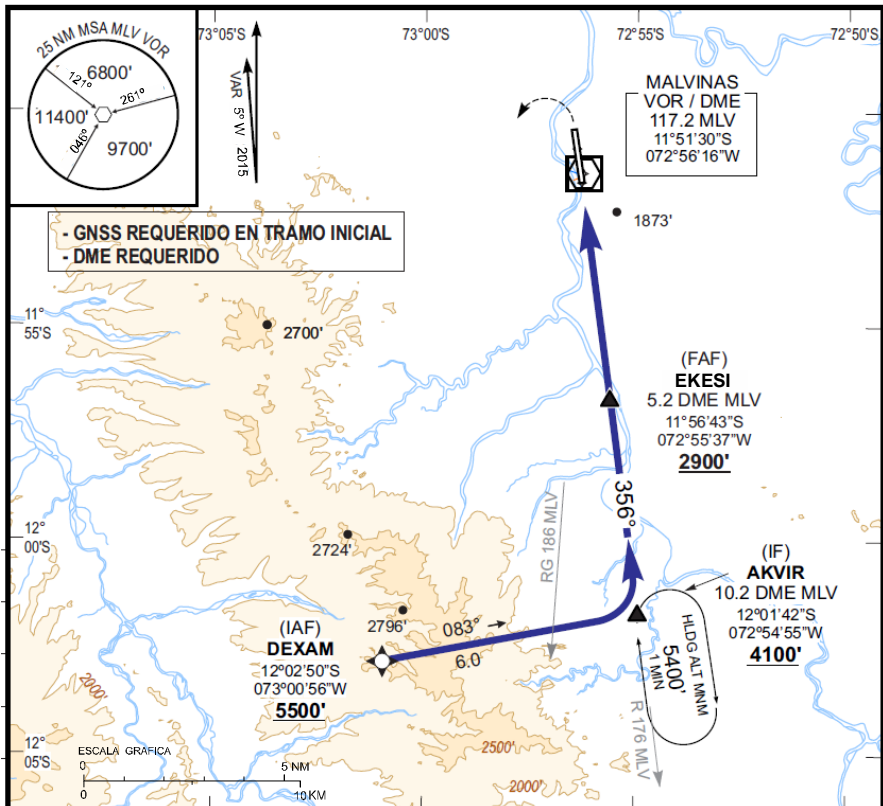


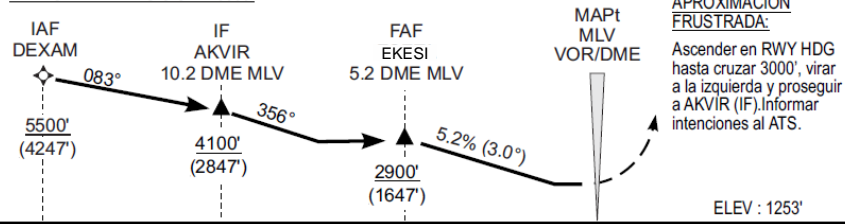
**CARTA DE APROXIMACION
POR INSTRUMENTOS
OACI**

FIS 123.5
AFIS 121.9
ELEV AD 1253'

**LAS MALVINAS - PERU
VOR RWY 35**



ALTITUD DE TRANSICIÓN: 10000'



ELEV : 1253'

| OCA/H | A - B | C | ALTITUDES (ALTURAS) FNA | | | | | |
|----------------|---------------------|---------------------|-----------------------------|----------------------------|---------------------------|---------------------------|-----|-----|
| APROX. DIRECTA | 2130' (877') 2000 m | 2130' (877') 4000 m | 5 DME MLV 2830' (1577') | 4 DME MLV 2510' (1257') | 3 DME MLV 2190' (937') | 2 DME MLV 1870' (617') | | |
| EN CIRCUITO | NO PERMITIDO | | VELOCIDAD VERTICAL DESCENSO | GS (KT) | 90 | 110 | 130 | 160 |
| | | | | FT / MIN | 480 | 585 | 690 | 850 |

Cambios: Punto EKESI por ESSETA. Incorporación SUP 11/14