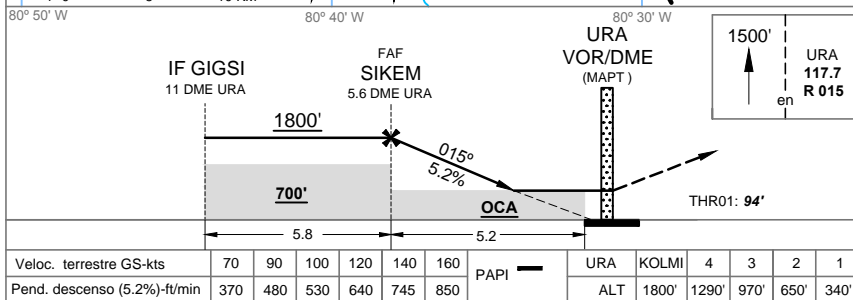
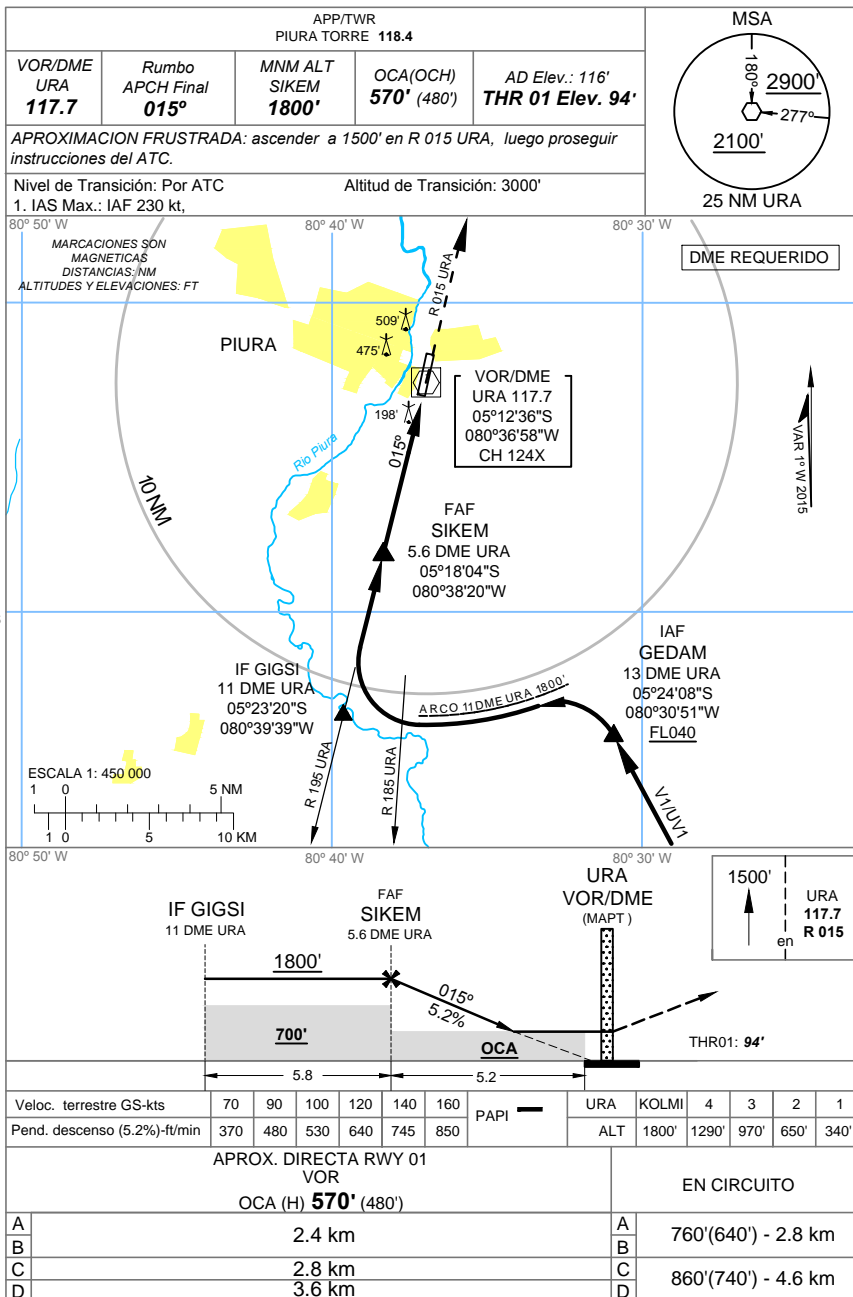


CARTA DE APROXIMACION POR INSTRUMENTOS (IAC) - OACI

CAP FAP Guillermo Concha Iberico - Piura
VOR RWY 01



Veloc. terrestre GS-kts	70	90	100	120	140	160	PAPI	URA	KOLMI	4	3	2	1
Pend. descenso (5.2%)-ft/min	370	480	530	640	745	850		ALT	1800'	1290'	970'	650'	340'

APROX. DIRECTA RWY 01 VOR		EN CIRCUITO	
OCA (H) 570' (480')			
A	2.4 km	A	760'(640') - 2.8 km
B	2.8 km	B	860'(740') - 4.6 km
C	3.6 km	C	
D		D	

Cambios: Punto SIKEM, MSA, Declinación Mag. 2015