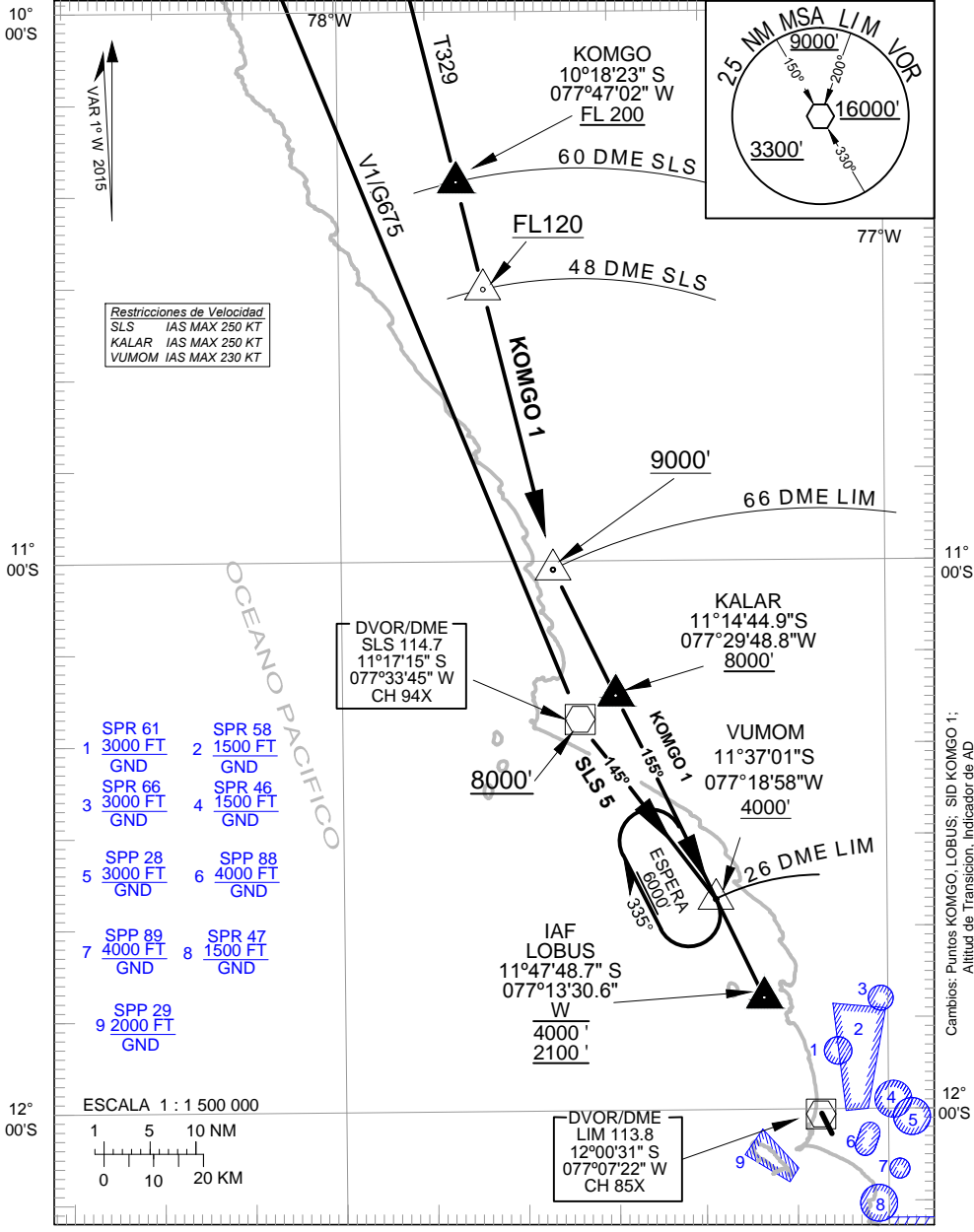


CARTA DE LLEGADA NORMALIZADA
VUELO POR INSTRUMENTOS
(STAR) - OACI

LIMA - PERÚ
INTL JORGE CHAVEZ
RWY 15
(SLS5) SALINAS 5 - KOMGO 1

ATIS TWR	127.9 118.1	APP RADAR N	119.7 119.5	ACC N ACC NE	128.1 128.5	ALTITUD DE TRANSICION	10000'
-------------	----------------	----------------	----------------	-----------------	----------------	-----------------------	--------



Restricciones de Velocidad
SLS IAS MAX 250 KT
KALAR IAS MAX 250 KT
VUMOM IAS MAX 230 KT

- | | | | |
|---|--------------------------|---|--------------------------|
| 1 | SPR 61
3000 FT
GND | 2 | SPR 58
1500 FT
GND |
| 3 | SPR 66
3000 FT
GND | 4 | SPR 46
1500 FT
GND |
| 5 | SPP 28
3000 FT
GND | 6 | SPP 88
4000 FT
GND |
| 7 | SPP 89
4000 FT
GND | 8 | SPR 47
1500 FT
GND |
| 9 | SPP 29
2000 FT
GND | | |

